

## LIMITED WARRANTY

Commodity Axis, Inc.® warrants that the ViaAqua® Titanium Heater is free from defects for a period of one year from the initial date of purchase shown on the original cash register receipt. Commodity Axis, Inc.® disclaims all other warranties, express or implied, including but not limited to any implied warranties of merchantability and/or fitness for a particular purpose. Although this limited warranty gives you specific rights, you may have other rights which vary from state to state. This warranty is void if the failure is due to misuse, tampering, negligence, abuse, accident and/or submersion, a failure to properly install, maintain, clean, reassemble, and/or failure to use ViaAqua® Titanium Heater with a Ground Fault Circuit Interrupter (GFCI).

## CONSUMER REMEDIES

Commodity Axis, Inc.® entire liability and your sole and exclusive remedy shall be either repair or replacement of the ViaAqua® Titanium Heater only if you return the defective unit directly to Commodity Axis, Inc.® with the original receipt in its original box along with seven dollars (\$7.00) for shipping and handling. Do not send the ViaAqua® Titanium Heater by insured mail. You may send your returns or replacements by UPS requiring a signature upon arrival. Any replaced unit will be warranted for the remaining time of the original warranty period. In no event shall any shipping charges be reimbursed. In no event will Commodity Axis, Inc.® be liable for any consequential or incidental damages, including but not limited to, lost sea life, personal injury, property damage, equipment damage, lost profits, lost wages, lost savings, lost income, etc., arising out of the use of the ViaAqua® Titanium Heater. Some states do not allow for the limitation or exclusion of liability for incidental or consequential damages, so the above exclusion may not apply to you.

## RETURNS

Please contact our service center at (888) 838-3882 or fax (888) 989-0878 to arrange repair and/or replacement. Please allow 4-6 weeks for all returns. Commodity Axis, Inc.® cannot ship nor respond to a P.O. Box address.

# Titanium HEATER

## WARRANTY CARD

Please mail warranty card and PROOF OF PURCHASE within 15 days of purchase to:  
Commodity Axis, Inc., 1011 Avenida Acaso Ste. A, Camarillo, CA 93012, USA.

Customer's Name:

Model No.

Address:

Date of Purchase

Dealer Name:

Phone No.

**WARNING!** Buyer/user assumes all responsibility for safety and proper use not in accordance with the directions and safety labels.



# Titanium ViaAqua® HEATER

## FEATURES

- Titanium heating element
- Fully submersible
- Adjustable temperature setting
- Easy to read temperature indicator
- Compact design
- Remote temperature sensor
- For use in fresh and saltwater

Virtually unbreakable, these heaters have a titanium heating probe and a remote external thermostat for easy temperature adjustment. Unlike a conventional heater that read the temperature on the heater, these units have a remote sensor that can be placed up to 8in away from the heating element ensuring a correct and accurate temperature throughout the aquatic environment.

## AVAILABLE MODEL

ITEM NO.	WATTAGE	RECOMMENDED TANK SIZE	UPC # 0069037
VA 50T	50 w	< 50 Liters / 13 Gallons	1628 4
VA 75T	75 w	< 75 Liters / 20 Gallons	1629 1
VA 100T	100 w	< 100 Liters / 25 Gallons	1630 7
VA 150T	150 w	< 150 Liters / 40 Gallons	1631 4
VA 200T	200 w	< 200 Liters / 50 Gallons	1632 1
VA 250T	250 w	< 250 Liters / 65 Gallons	1824 0
VA 300T	300 w	< 300 Liters / 80 Gallons	1633 8
VA 350T	350 w	< 350 Liters / 100 Gallons	1634 5

## WARNING AND SAFEGUARDS

*Before installation of the ViaAqua® Titanium Heater, read and follow these important warning and safeguards.*

1. Always disconnect the heater from the power supply prior to maintenance of the aquarium.
2. Never allow the temperature controller to come in contact with water/moisture. If the temperature controller comes in contact with water/moisture, unplug the heater from the power supply before removing. This will cause electrical shock and premature failure of the heater.
3. When removing the heater from the aquarium, unplug the unit for a minimum of 30 minutes prior to removing heating element.
4. Do not operate the unit if any of the cords are damaged.

- Do not operate the heater unless the heating probe and sensor are in water
- Do not place the heater in any type of filtration. Heating probe and sensor can only be installed in the main body of the aquarium.
- The heating probe and sensor must be in the same body of water.
- The water level must be maintained so that the heating probe and sensor are fully submersed at all times.
- For household use only.

- Plug the temperature controller into a GFCI outlet.
- Set the temperature using the knob. Red light indicates unit is heating.
- Confirm the temperature with an accurate thermometer placed on the opposite side of the aquarium. A small difference between the reading of the thermometer and the temperature controller is normal. Adjust accordingly.

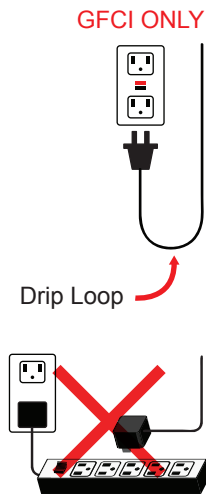
*This product may contain chemicals known to the state of California to cause cancer and or birth defects or other reproductive harm. Wash your hand after handling this product.*

*It is your sole responsibilities to verify that the plug and the receptacle are clean and free of moisture and salt build up at all times. The receptacle must be free of water, salt, calcium, magnesium and dust. Failure to do so can cause fire, damage to property, permanent damage to the product and personal injury not limited to loss of life.*

*Do not plug into extension cord/power strip.*

*A drip loop must be used when plugging all electrical aquarium devices. A drip loop is that part of the cord hanging below the receptacle.*

*The national code requires that a GFCI (Ground fault circuit interrupter) be used in the branch circuit supplying all power to water pumps and electrical aquarium equipment. If you do not have a GFCI, have an electrician install one prior to operating any aquarium component.*

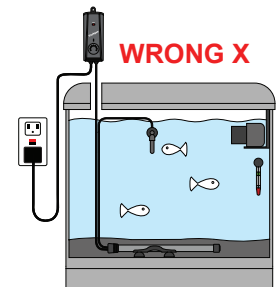
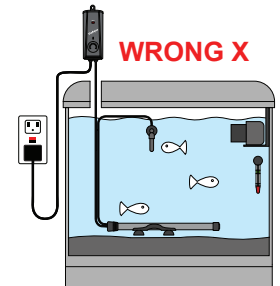
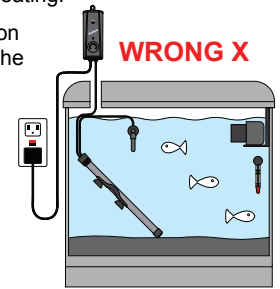
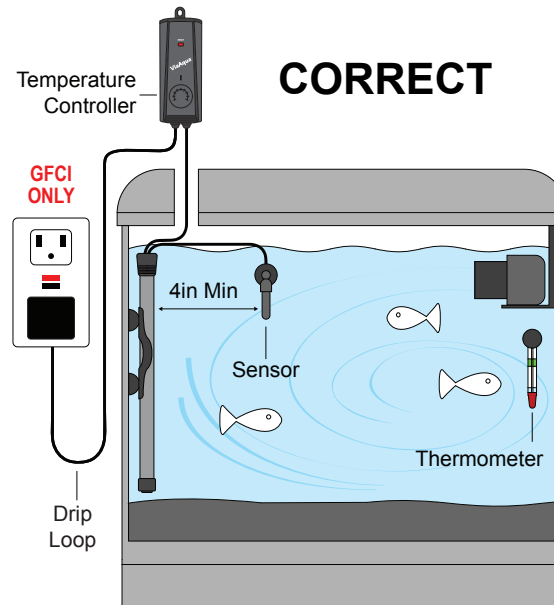


## DIRECTIONS FOR INSTALLATION

- Select the proper wattage heater for the aquarium. Place the heater where there is good water circulation. Using the two suction cups provided, affix the heating probe to the inside of the aquarium.
  - Do not place the heater on the substrate.
  - Do not cover heater with substrate.
  - Do not place in the substrate.
  - Do not place the heater in filtration. Only place the heating element and sensor in the main body of the aquarium.
- Affix the sensor a min. of 4in away from the heating probe. **NOTE: The heating probe and sensor must be in the same body of water.**
- Place the temperature controller above the aquarium and affix to the wall. The temperature controller is never to come in contact with water. Failure to do so will cause electrical arcing, fire hazard, premature failure of the unit, and/or loss of life.
- Attach the thermometer to the opposite side of the aquarium. Allow 10-15 minutes for the heater to acclimate to the aquarium temperature before plugging the temperature controller into an electrical outlet. **NOTE: When plugging the ViaAqua® Titanium Heater into GFCI outlet, a drip loop must be arranged by the user for each cord connecting an aquarium appliance to an electrical outlet.**
- Verify there is good water circulation by heating probe.

### CAUTION:

*The heater must be fully submersed in water at all time. MUST USE GFCI (Ground Fault Circuit Interrupter)*



  
**COMMODITY AXIS**  
 COMMODITY AXIS INC  
 Commodity Axis Inc.®  
 1011 Avenida Acaso Ste. A  
 Camarillo, CA 93012, USA.  
 Fax: (888) 989-0878  
[www.ViaAquaOceanpure.com](http://www.ViaAquaOceanpure.com)